



## Norma F Marsh

April 12, 1919 - May 10, 2016

Norma was born to Frank and Ida DeArmond on the farm near Jet Ok. on April 12, 1919 and joined the Lord on Tuesday May 10, 2016 at the age of 97 years and 28 days.

Norma started school in Jet and attended both Jet and Cherokee schools. On October 3, 1937, she married Alford Marsh. To this union, two daughters and a son were born. Shirley, Sharon, and Jerry.

Norma worked at several jobs in Cherokee including TG&Y, Keys Drug, and Stella School as a substitute teacher. But her primary job was a homemaker for her children.

She is survived by her two daughters, Shirley George and husband Ercil of Wakita, and Sharon LaRue of Cherokee, 8 grandchildren, 12 great grandchildren, and 23 great-great grandchildren.

Norma has been reunited in Heaven with her husband Alford Marsh, her parents, a son, Jerry and son-in-law, Jim LaRue, her brother, Earl and sister, Bess Mills one grandchild and one great grandchild.

Memorials may be made to the Cherokee Friends Church. Condolences at the Goodwin Wharton Funeral Chapel.

# Cemetery Details

## Cherokee Municipal Cemetery

Cherokee Municipal Cemetery, OK 73728

# Previous Events

## Service

MAY **14**. 1:30 PM (CT)

Cherokee Friends Church  
Cherokee, OK 73728

# Tribute Wall



“ *Wharton Funeral Chapel created a Tribute Video in memory of Norma F Marsh*



Wharton Funeral Chapel - May 12, 2016 at 11:40 PM

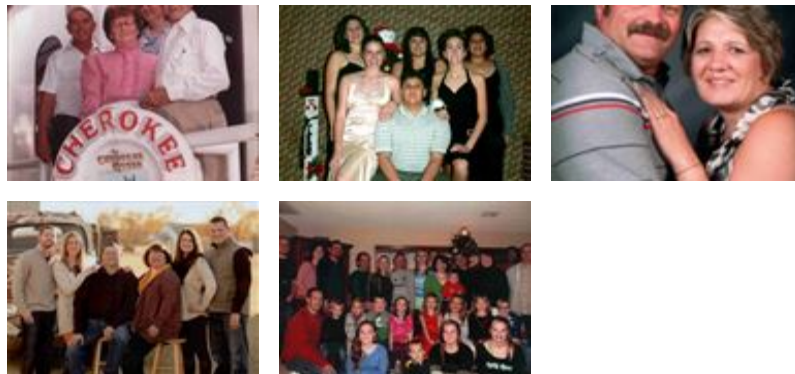


“ *Norma will be greatly missed. She was a wonderful Mother-in-Law to me. I loved her dearly. Janet (Marsh) Stout*

Janet (Marsh) Stout - May 13, 2016 at 08:09 AM



“ *53 files added to the album LifeTributes*



Wharton Funeral Chapel - May 12, 2016 at 11:26 PM